

Askew

D. Maroney

A Allegro vivace

Musical notation for section A, measures 1-5 and 6-10. The key signature is three sharps (F#, C#, G#) and the time signature is common time (C). The notation includes quarter notes, eighth notes, and rests. A 4-measure rest is indicated at the end of the second line.

B

Musical notation for section B, measures 11-19 and 20-25. The key signature is three sharps (F#, C#, G#) and the time signature is common time (C). The notation includes quarter notes, eighth notes, and rests.

C

Musical notation for section C, measures 26-33 and 34-38. The key signature is three sharps (F#, C#, G#) and the time signature is common time (C). The notation includes quarter notes, eighth notes, and rests. A 4-measure rest is indicated at the beginning of the first line.

D

Musical notation for section D, measures 39-46 and 47-50. The key signature is three sharps (F#, C#, G#) and the time signature is common time (C). The notation includes quarter notes, eighth notes, and rests. A 3-measure rest is indicated at the end of the first line.

53

2

E

65

F

71

76

G

81

6

92

96

4

H

Musical staff for section H, measures 95-108. The key signature is three sharps (F#, C#, G#). The melody consists of quarter and eighth notes with rests.

109

Musical staff for section H, measures 109-113. The key signature is three sharps (F#, C#, G#). The melody continues with quarter and eighth notes.

I

114

Musical staff for section I, measures 114-121. Measure 114 contains a whole rest with a '4' above it. The key signature changes to two sharps (F#, C#) at measure 115. The melody resumes with quarter and eighth notes.

122

Musical staff for section I, measures 122-126. The key signature is two sharps (F#, C#). The melody continues with quarter and eighth notes.

127

Musical staff for section I, measures 127-134. Measure 134 contains a whole rest with a '4' above it. The key signature changes to three sharps (F#, C#, G#) at measure 135. The melody resumes with quarter and eighth notes.

J

Musical staff for section J, measures 135-140. The key signature is three sharps (F#, C#, G#). The melody consists of quarter notes with rests.

141

Musical staff for section J, measures 141-146. The key signature is three sharps (F#, C#, G#). The melody continues with quarter notes and rests.

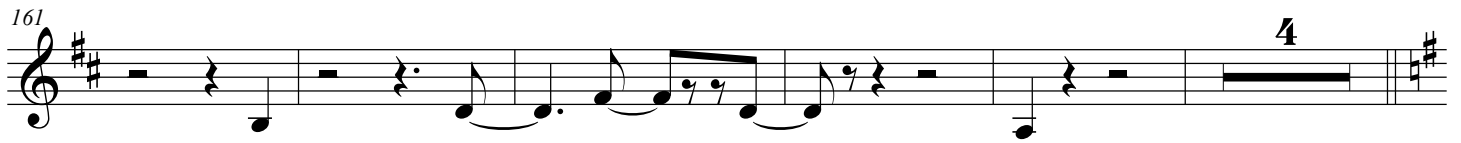
K

147

Musical staff for section K, measures 147-155. Measure 147 contains a whole rest with a '4' above it. The key signature changes to two sharps (F#, C#) at measure 148. The melody resumes with quarter and eighth notes.

156

Musical staff for section K, measures 156-163. The key signature is two sharps (F#, C#). The melody continues with quarter and eighth notes.

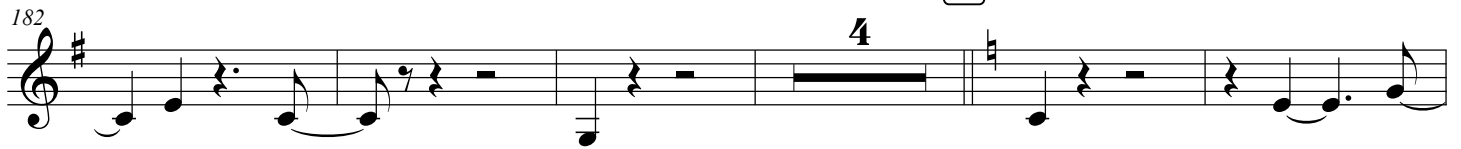
161  4

L




176 

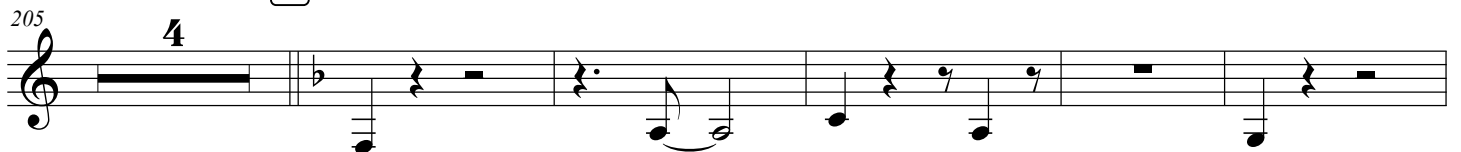
M

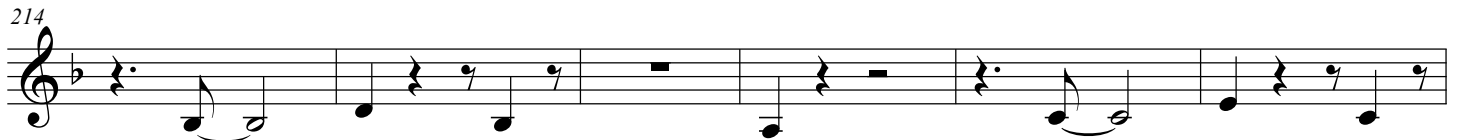
182  4


191 

198 

N

205  4

214 

220  6

O



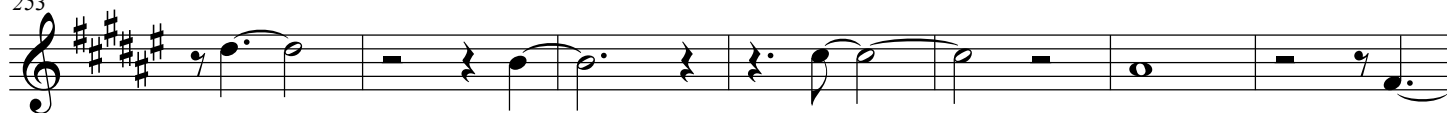
239



246



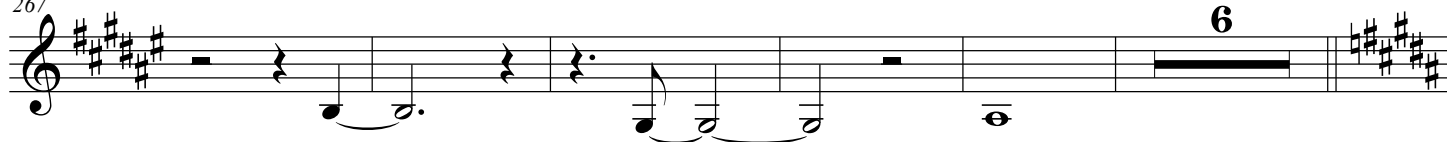
253



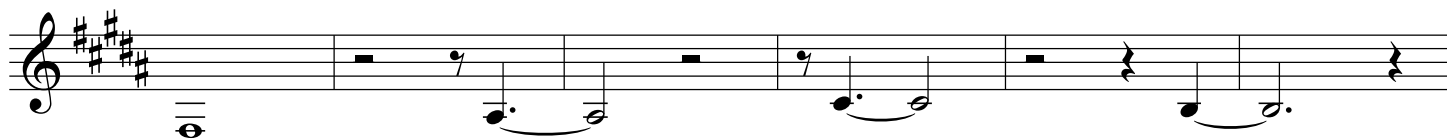
260



267



P



284



290



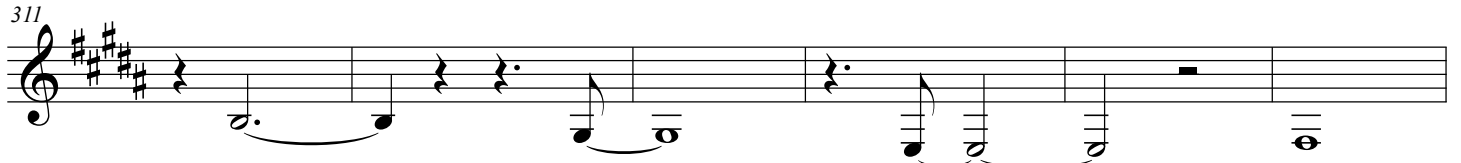
297



304

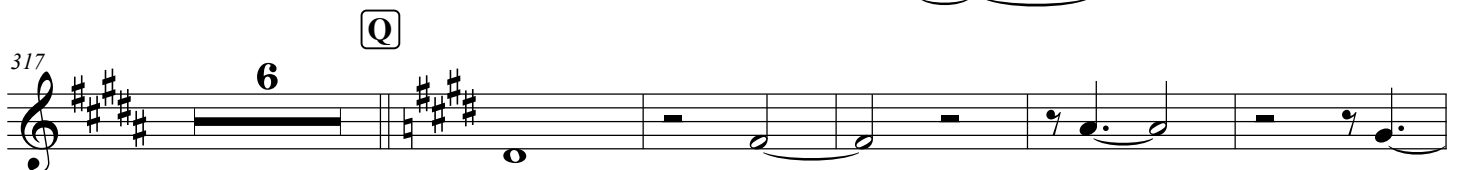


311



317

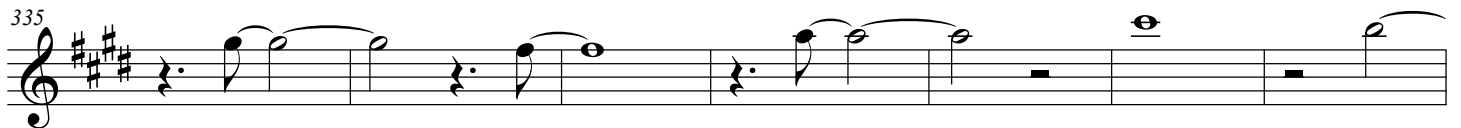
Q



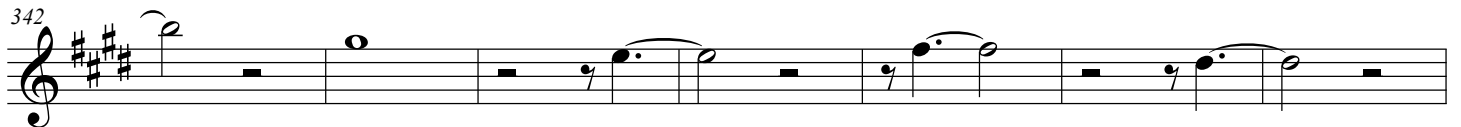
328



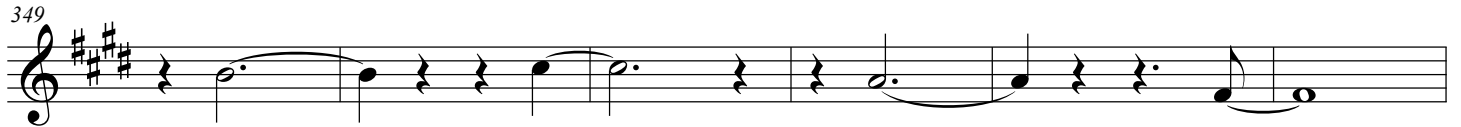
335



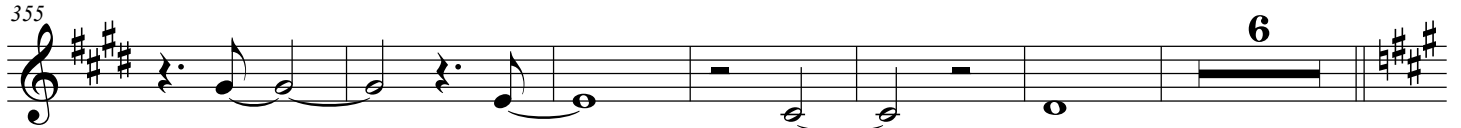
342



349



355



R

